

Live comfortably.™

Special Features:

- ◆ Coated air coils prevent corrosion, enhancing reliability and life expectancy.
- ◆ Hot water generator allows the capture of free, unused heat typically cutting hot water cost by 30-50%.
- ◆ Standard variable speed blower motor ensures quiet start up and operates at a fraction of the cost of a conventional blower motor.
- ◆ Hydronic heating function allows a single unit to provide forced air heating, forced air cooling, and radiant floor heat. Since you only need one unit, this reduces installation costs and minimizes system maintenance.
- ◆ For additional peace of mind, ask about the range of GeoComfort warranties: standard and extended.

Unit Applications:

One of the many advantages the GeoComfort Compass Series Combination unit offers is the flexibility of applications designed for each home.

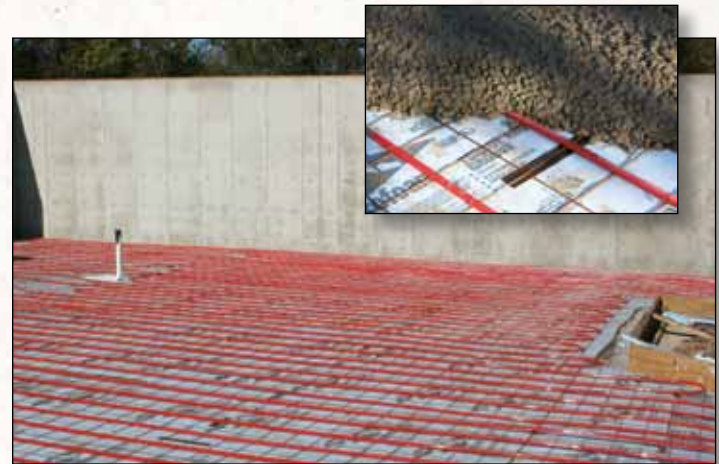
- ◆ Radiant Floor Heating
- ◆ Domestic Hot Water (Hot Water Generator)
- ◆ Forced Air Heating
- ◆ Forced Air Cooling



Unit Performance

Model	Capacity	Heating		Cooling	
		Btu/hr	COP	Btu/hr	EER
GCT024	Full Load	Future Model			
	Part Load				
GCT036	Full Load	28,500	4.1	38,900	18.2
	Part Load	22,000	4.8	29,000	27.9
GCT048	Full Load	39,100	4.0	51,400	17.7
	Part Load	31,200	4.7	40,400	25.2
GCT060	Full Load	48,400	3.8	62,800	16.9
	Part Load	38,700	4.2	48,600	23.5
GCT072	Full Load	57,900	3.6	68,900	15.0
	Part Load	48,100	4.0	56,500	20.3

Note:
 Rated in accordance with ISO Standard 13256-1 which includes Pump Penalties.
 Heating capacities based on 68.0°F DB, 59.0°F WB entering air temperature.
 Cooling capacities based on 80.6°F DB, 66.2°F WB entering air temperature.
 Entering water temperatures Full Load: 32°F heating / 77°F cooling.
 Entering water temperatures Part Load: 41°F heating / 68°F cooling.



Example of radiant floor tubing installed in a basement. The tubing is placed over an insulation pad. Concrete is then poured over for the floor.



The above illustration depicts a typical combination system installation with forced air and radiant floor in heating mode.

GeoComfort systems are built in the heart of America with stringent quality control systems and the most comprehensive testing within the geothermal heating and cooling industry.

Please Recycle.
Thank You.

EMGL0006



Product specifications reflect available information at time of printing. Design and specifications may change without notice.

©Enertech Manufacturing, LLC. 2011

Rev: 01 Jun 2011-A